

One vision, Two sharp eyes with Our Innovation

# OA-1000

OPTICAL BIOMETER



- ACD and PACHY can be measured
- Display of real-time waveform
- Superluminescent diode (SLD)
- CAT (Cataract made)
- Link with ultrasonic method
- Calculation of IOL power

## OA-1000 SPECIFICATIONS

### Light source

Type	Superluminescent diode (SLD)
Wavelength	820 – 850 nm
Output	450 $\mu$ W

### Alignment

Auto/Manual

### Axial length measurement

Measurement method	Light interference
Measurement area	14 – 40 mm
Display resolution	0.01 mm

### Anterior chamber depth measurement

Measurement method	Light interference
Measurement area	1.5 – 7.0 mm
Display resolution	0.01 mm

### Corneal thickness measurement

Measurement method	Light interference
Measurement area	200 – 1200 $\mu$ m
Display resolution	10 $\mu$ m

### Display

VGA color TFT LCD

### Printer

Built-in thermal printer

### Power source and power consumption

100 VAC-240VAC, 50/60 Hz, 160 VA

### Dimensions and weight

307 (W) x 493 (D) x 466 (H) mm, 19 kg

\*The separately available "BIO & PACHY METER AL-3000" is required for calculating IOL power

One vision, Two sharp eyes with Our Innovation

# OA-1000

OPTICAL BIOMETER

High Speed, Easy Measurements,  
Non Contact



- ACD and PACHY can be measured
- Display of real-time waveform
- Superluminescent diode (SLD)
- CAT (Cataract made)
- Link with ultrasonic method
- Calculation of IOL power



 TOMEY®

Manufactured by

 MicroTomography

#### Tomey Corporation [Asia-Pacific]

2-11-33 Noritakeshinmachi  
Nishi-Ku, Nagoya, 451-0051, Japan  
Tel: ++81-52-581-5327  
Fax: ++81-52-561-4735  
E-Mail: intl@tomey.co.jp

#### Tomey GmbH [Europe]

Am Weichselgarten 19a  
D-91058 Erlangen-Tennenlohe, Germany  
Tel: ++49-9131-77710  
Fax: ++49-9131-777120  
E-Mail: info@tomey.de

For more information, visit our web site <http://www.tomey.com>

©2005 Tomey Corporation. Specifications are subject to change without notice. Any products mentioned herein are registered trademarks of their respective owners.

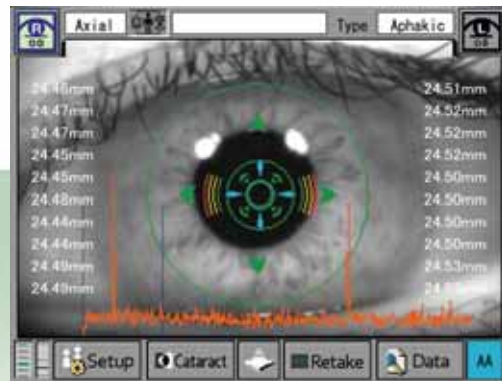
 TOMEY®

One vision, Two sharp eyes with Our Innovation

# OA-1000

OPTICAL BIOMETER

# “High Speed” “Easy Measurements” “Non Contact”



## High speed

High-speed measurement that captures 10 data sets in series per second completes necessary measurement within a short period of time. Measurement can be performed even for patients with unstable sight.

## Adoption of low-output measurement light source (SLD)

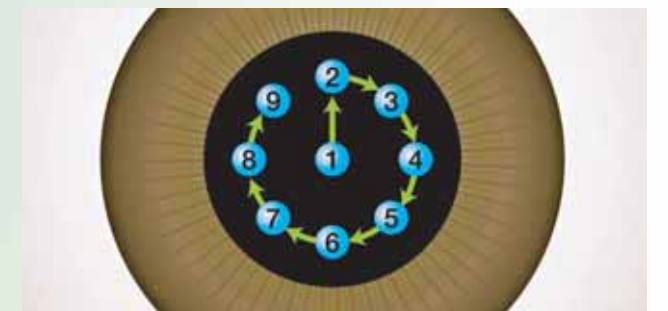
A low-output SLD has been adopted for the measurement light source, meaning there is no limit on the number of measurements per day. Therefore, data can be captured multiple times.

## Easy Operation

Touch Alignment automatically adjusts the measurement position when you simply touch the center of the pupil of a patient's eye shown on the screen, and Auto Shot automatically captures an image when the required measurement conditions are met. These functions reduce measurement errors introduced by physicians and improve the reproducibility of measurement. Entry of the patient's data, including an ID, is not required, so measurement can be performed immediately after turning on the instrument. Administrative data can be easily entered from the touch panel.

## CAT (Cataract) mode

Because CAT (Cataract) mode is provided to capture the light interference peak from the surface of the retina and automatically perform measurement at the parafovea, complicated manual operation is not needed even when the center of the eye is unclear.



## Non Contact

- Non-contact measurement reduces measurement errors caused by pressure on the eye and ensures high reproducibility.
- Less likely to cause variations in inspection data depending on patients.
- There is no risk of infection.
- Measurement can be performed quickly.

## Link with ultrasonic method

When connected to the "Axial Length and Corneal Thickness Measurement Instrument AL-3000," measurements that are difficult using the light interference method, such as turbidity of a crystal lens, can be performed. This ensures more precise and stable data by selecting the light interference method or ultrasonic method depending on the characteristics when measuring the axial length, so the quality of the intraocular lens implant can be improved.

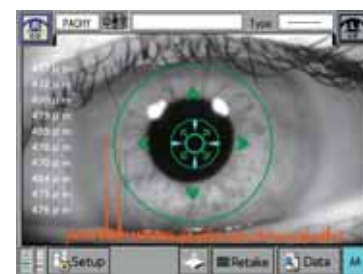


## ACD and PACHY can be measured

In addition to the axial length, the anterior chamber depth (ACD) and corneal thickness (PACHY) can be also measured by the light.



ACD



PACHY

## Calculation of IOL power

- IOL power can be calculated by the "BIO & PACHY METER AL-3000" after measuring the radius of corneal curvature with your keratometer.
- OKULIX is a program for the calculation of the optical properties of human eye by means of numerical ray tracing. OKULIX thus allows a fast and easy selection of the power of intraocular lenses (IOL).

## Display of real-time waveform

Measured waveforms are displayed on the screen in real time. In manual mode, physicians can perform measurements while checking waveforms.

