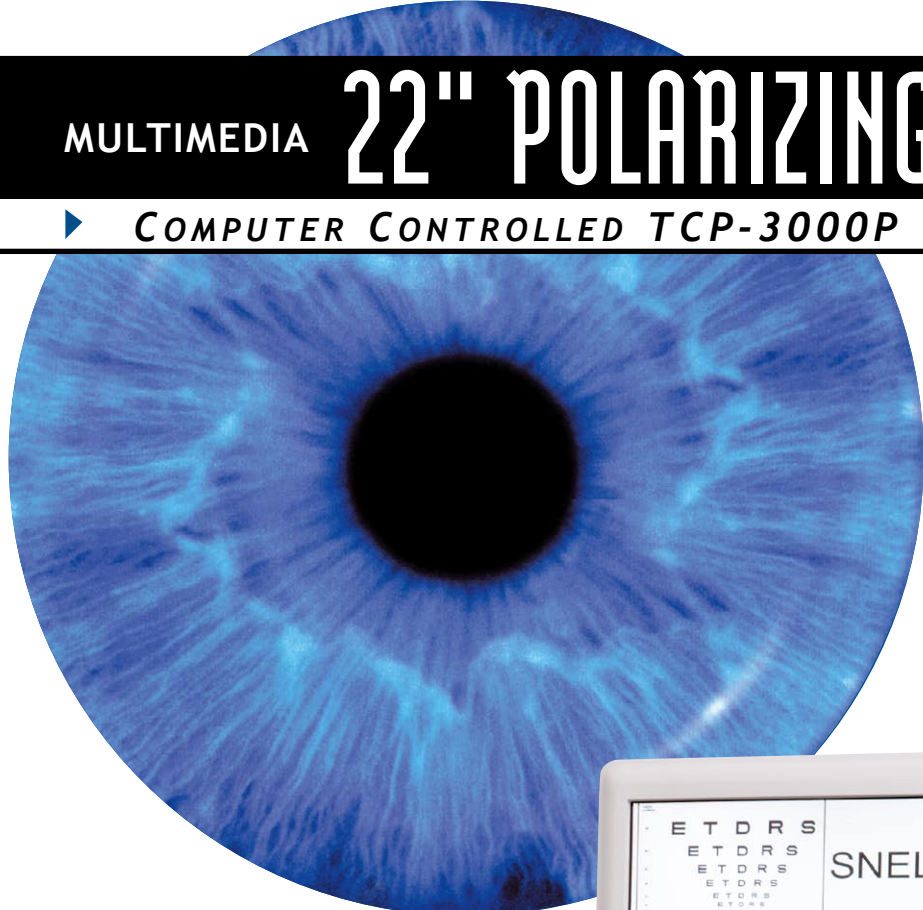


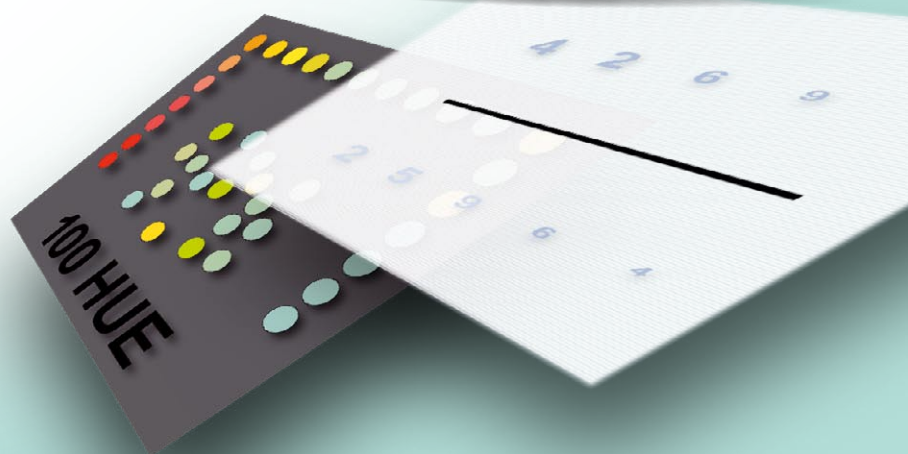
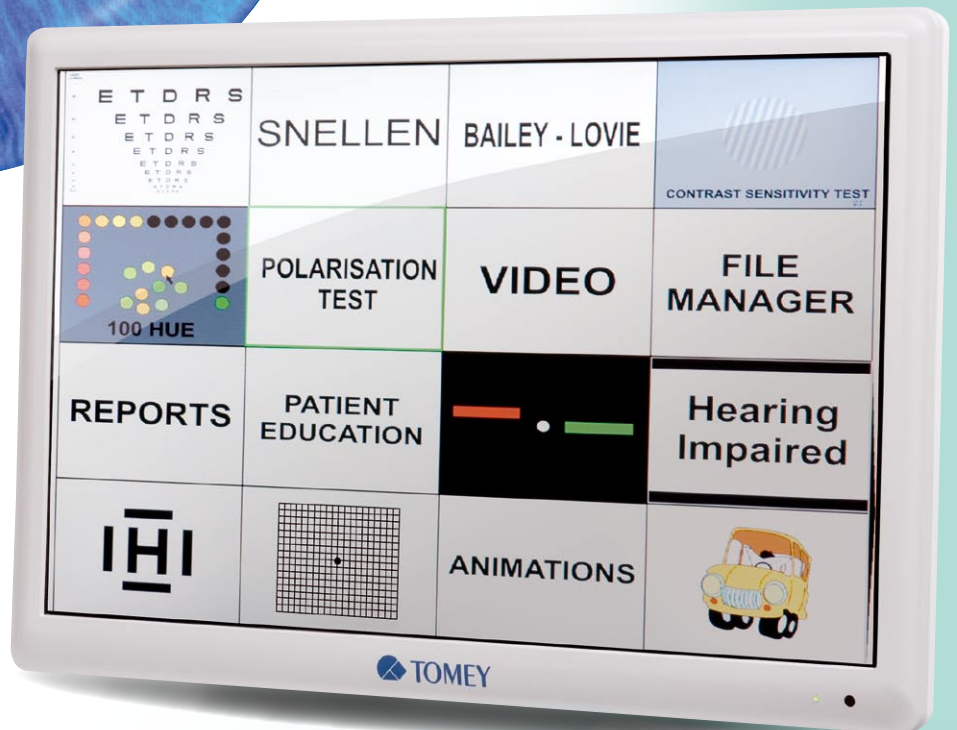
MULTIMEDIA

22" POLARIZING CHART PANEL

▶ COMPUTER CONTROLLED TCP-3000P



- *Polarizing Test Chart Selection*
- *High Quality 22" LCD*
- *Integrated Computer*
- *Programmable Display Sequences*
- *Patient Education*
- *Colour Vision Test Charts*
- *Printable Test Reports*
- *Multimedia Tool*



Latest Technology

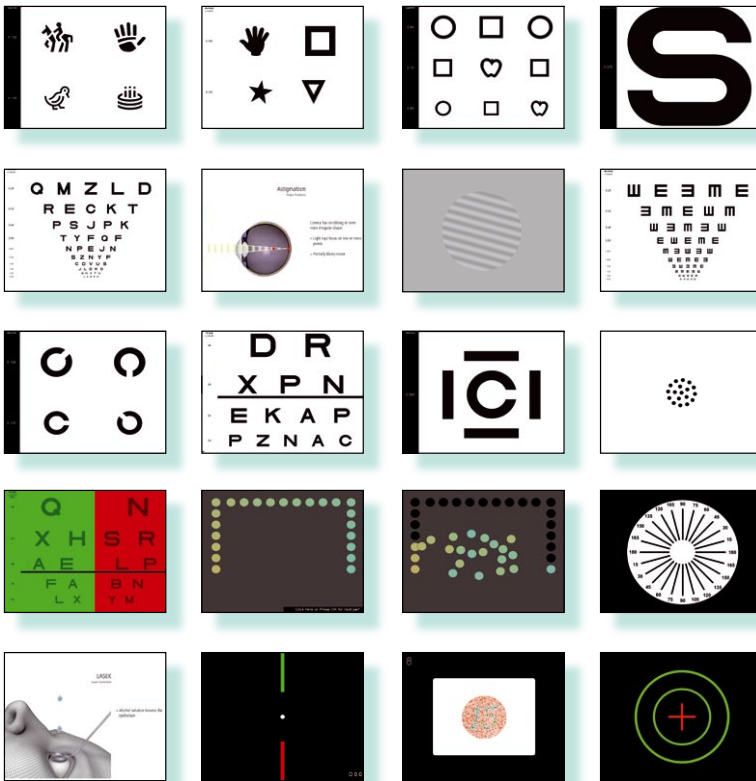
The polarizing TOMEY Chart Panel TCP-3000P describes the modern way of displaying optotypes for refraction tests. Unlike a common chart projector the unit offers an unlimited number of test charts due to the programmable built in computer. Of course all charts, necessary for conventional refractive tests, are already pre-programmed. The randomised display of charts is also an option. In addition to those you will appreciate several colour vision tests like Ishihara or 100 HUE as well as the various displays to quantify your patients contrast sensitivity. Furthermore you will find ETDRS chart, HOTV test, Fixation Disparity test and AMD optotypes. You can display different optotypes for left or right eye and the systems red/green display can be adjusted to match with almost any red/green filters in the eye care industry.

You can easily adapt the chart sizes according to your individual test distance. This distance might vary between 2.0-7.0 m (step 0.1m). For patient education you can show and create various pictures and animations. The test report function allows you to create individual reports and print them.

Polarizing Test Charts (Samples)



Available Charts and Tests



SPECIFICATIONS

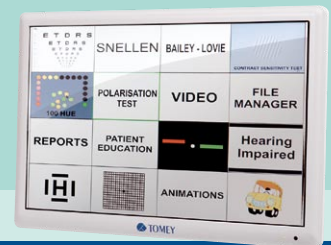
<i>Auto-Off Function</i>	Adjustable from 4 to 240 Minutes
<i>Visus Units</i>	Snellen Decimal, LogMar, Snellen m. (6/), Snellen ft. (20/)
<i>Distance Units</i>	Feet or Meter
<i>CP Type</i>	TCP-3000P
<i>Display</i>	22"
<i>Classification</i>	Class I
<i>Remote Control</i>	Included (3 Channels Adjustable)
<i>Battery Type</i>	AAA LR6

Available Charts and Tests

<i>Polarizing</i>	ETDRS Pol. Mask, Phoria Test, Snellen Pol. Mask, Vert./Horiz. Coincidence, Balance, Stereo Test, TNO, Pol. 3D
<i>Standard</i>	Snellen, Landolt, Letters, Numbers, Characters
<i>Colour Vision</i>	Ishihara, 100 HUE
<i>Red-Green</i>	Schober, Worth, Bichrom-Balance, Fixation Disparity, Coincidence h/v
<i>Low Vision</i>	ETDRS, Crowding Bars, AMD-Optotypes, Amsler
<i>Contrast</i>	Contrast-Sensitivity, Contrast-Adjustment
<i>Children</i>	HOTV, Hands, Pictures, Symbols, Animations
<i>Extra</i>	Hearing/Speaking Impaired, Patient Education, 3D Images

Dimensions & Electric Requirements

<i>Dimensions WDH</i>	520 x 120 x 350 mm
<i>Weight</i>	8 kg
<i>Power Supply</i>	AC 115 V to 230 V
<i>Frequency</i>	50/60 Hz
<i>Power Consumption</i>	Less than 70 VA



Self Explanatory Menu

ETDRS	SNELLEN	BAILEY-LOVIE	STANDARD RESOLUTION TEST
POLARISATION TEST	VIDEO	FILE MANAGER	
REPORTS	PATIENT EDUCATION	Hearing Impaired	
IHI	ANIMATIONS		
ETDRS POLARIZATION MASK	SNELLEN POLARIZATION MASK	PHORIA TEST	
VERTICAL HORIZONTAL COINCIDENCE	BALANCE	STEREO TEST	
TNO	POLARIZATION 3D		

Visit our internet domain:

www.tomey.de

TOMEY EUROPE
TOMEY GmbH
Am Weichselgarten 19a
91058 Erlangen
Germany
Phone (+49)-9131-77710
Fax (+49)-9131-777120
E-Mail info@tomey.de

TOMEY ASIA-PACIFIC
TOMEY CORPORATION JAPAN
2-11-33 Noritakeshinmachi
Nishi-ku, Nagoya 451-0051
Japan
Phone (+81)-52-581-5327
Fax (+81)-52-561-4735
E-Mail intl@tomey.co.jp